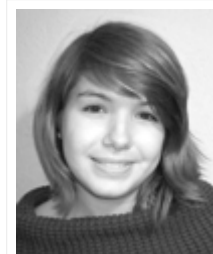




Professional Engineers in Industry Scholarship

▼ DOWNLOAD AN APPLICATION

Professional Engineers in Industry Scholarship is a \$2,500 award. Applicants must be sponsored by a NSPE member. Students who are children, dependents, or relatives of NSPE members are given preference in the scholarship selection process. Students must have completed a minimum of two semesters or three quarters of undergraduate engineering studies (or be enrolled in graduate study) in a program accredited by the [ABET](#).



Gretchen Heberling
2011 Winner

A. Eligibility Requirements

Applicants must be students who

- Currently have a minimum Grade Point Average of 2.50.
- Completed a minimum of two semesters or three quarters of engineering undergraduate studies in a program accredited by the Accreditation Board of Engineering & Technology (ABET). Official transcript required.
- Is an NSPE student member or is sponsored by an NSPE member in good standing. NSPE membership number required. If two applicants are evaluated to be equal, preference will be given to children/grandchildren of PEI members.
- Students attending a community college or junior college must have applied as undergraduate engineering student at an ABET accredited program. Proof of application and transcript required.
- Applicants must submit letters of recommendation from at least two professors in the applicant's field of engineering studies or appropriate math/science professors. Recommendation letters may be mailed separately by the professors to the address listed below.
- Applicants must submit a typewritten essay of approximately 500 words. Essay must discuss your interest in engineering, specific field of engineering that is being pursued and then occupation / industry you propose to follow upon graduation.
- Scholarship winner will be required to provide their Social Security number to receive the award

B. Evaluation Criteria

Applicants will be evaluated based on:

- Work Experience (Internships / Co-Op / Part Time)
- Professional/Technical Societies
- Essay (Grammar, Spelling, Content)
- Activities/Honors

C. Required Application Materials

Applications must include the following:

- Completed Application
- Official Transcript
- Resume
- Essay
- Letters of Recommendation
- List of Memberships
- List of Activities
- Proof of Acceptance to school (if required)

D. Other

- Application deadline is April 1;
- All applicants will be notified of the final selection by May 1;

2011 Professional Engineers in Industry Scholarship Winner: Gretchen Heberling

Gretchen Heberling is an Architectural Engineering junior at the University of Wyoming (UW). She has worked as a teaching assistant at the University Honors Department and completed a competitively-awarded 2010 research grant on facility upgrades for small manufacturers. Gretchen discovered her love of engineering while volunteering as a Design Apprentice at the National Building Museum in Washington DC. Her academic emphasis is on structural analysis, and sustainable "green" building design and fabrication. She has a particular interest in building information modeling, improving building thermal efficiencies, and increasing recycling in the construction trades. Gretchen plans to pursue a M.S. in High Performance Buildings and LEED

certification.



©2011 National Society of Professional Engineers | 1420 King Street, Alexandria, VA 22314 | 703 684 2800